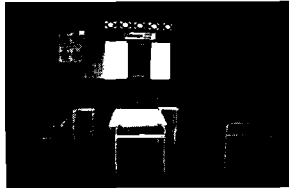


This can be accessed through the Portal at <http://www.subud.net> and the credit on line service used for all MSF administered funds.

Humanitarian Projects

The past four years has seen a partnership grow with SDIA. MSF has made grants worth \$65,000 to 10 SDIA recommended projects covering South America, Africa and Indonesia. \$20,000 of this came from the Farkas Endowment Fund which earmarks 25% of the fund's earned interest specifically for children's wellbeing.



Hospital Beds

Education

Lewes School, UK - The school newly opened in September 2000, provides holistic education for 5-11 year olds, plus a nursery and after school club. MSF gave a grant of \$5,000 to cover the costs and the interest of a commercial loan for a two year period which enabled the purchase of the school building to be finalised.



Youth

SYIA Programs: The SYIA co chairs need to devote time and effort to continue building the foundation that will set a positive and useful precedent for the future development and success of SYA, enabling SYA become well established and functional within the Subud Organisation.

SYIA asked for funding for projects and activities left to their discretion. In response MSF agreed to \$5,000 for discretionary use and \$5,000 on submission of a detailed application.

Joint SES / SYA Project YES

MSF provided \$20,000 for the Youth Enterprise Support Scheme. Headed by Jan Duniewicz it became clear that far more fundamental support was required for our young people and the grant was well spent in providing this.

Enterprise

MSF gave a grant of \$6,500 towards the implementation of the Subud Portal, and a grant of \$10,000 towards the establishment of the Kalimantan Business and Development Office which will identify business, employment and consulting opportunities for Subud members in Kalimantan, support Subud member's enterprises and organise development seminars there.

Cultural Projects

MSF has given nominal support to two members' projects Harris Smart's book on Subud for the general public and Robert and Honora Foah's production of the opera The Phoenix and the Dove.

Support has also been given to SICA's own projects - the excellent SICA web site, the support for the preparation for the opening of Amanecer University, and the Kalimantan Pre-feasibility study for a joint Wing program there.

Altogether \$15,000 has been given in encouragement.

Other

Restricted donations for a total of \$82,133 were received, mainly for the Portal Project, Wing activities in Kalimantan, the Bapak Legacy Fund, the International Archives and the Lewes New School.

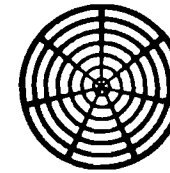


Subud house, Tlaxcala, Mexico.

1997 - 2001 All amounts in US\$

Project	Number	General Fund	Farkas Fund	Other	Total
Latihan Halls	14	191,639	38,000		229,639
WSA Projects	6	189,542	20,000	8,609	218,151
Wing & Others	22	111,400	20,000	73,524	204,924
MSF Projects	2	18,693			18,693
Total		511,274	78,000	82,133	671,407

For a detailed report please check MSF at www.subud.net



Muhammad Subuh Foundation

Steadily Supporting the Aims of the World Subud Association

MSF has been able to give in grants and loans from Spokane 1997- Bali 2001 over half a million dollars, a total of US \$671,407

The next four years...

Strengthening Subud's Foundation

- The work ahead is daunting
- to help in the alleviation of suffering
- to encourage the spark of creativity and enterprise
- to lend a hand to the young as they make their way in the world
- to attend to Subud's own concerns but with trust and commitment we can forward together.

Making use of MSF

Contributions can be made to the:

- Capital Use Fund which is spent at the discretion of the trustees
- Bapak Legacy Fund which is an endowment fund to which members can easily contribute. The capital in this fund is inviolate and the distribution of interest is reliant on the capital accumulated. This fund originated in gratitude to Bapak and to celebrate the centenary of Bapak's birth.
- Earmarked Funds for ISC, the Wings and the International Almoners

Bequests

Bapak foresaw members remembering Subud in their will, and MSF has, over the past four years, become more and more means through which members can direct their bequests to any activity in Subud confident that their wishes will be carried out.

In Spokane, MSF was given the mandate to more fully support the aims of the World Subud Association. In the past four years, MSF has interpreted this as supporting the long-term development of Subud, broadly through financing the acquisition of latihan premises, financing WSA projects that ensure the safe keeping and dissemination of Bapak's words and by supporting the work of the Wings through projects that reflect the fruition of the latihan.

To be able to more fully carry this out, the last Congress approved a spending policy of using yearly, up to 15% of MSF's unrestricted cash assets plus the current yearly income.

This Congress will set the policy for the next four years. However, to continue to support the future growth and development of Subud, MSF needs to build its capital base.

The trustees welcome the timely initiative of Subud USA in establishing the Bapak Legacy Fund.

Foundations have been devised, as far as is legally possible, to ensure that monies donated for the aims of a foundation are firstly, prudently nurtured and secondly, are spent according to the wishes of the donor. The Muhammad Subuh Foundation has a variety of funds to which members may contribute; this gives members the freedom to choose those activities in Subud that they wish to support whatever the size of their contribution.

I would like to take this opportunity of thanking those who have so generously supported MSF, with both large and small donations over the years, with the sincere wish that they are satisfied with the performance of MSF and in the hope that their trust in the Foundation will continue.

Peter Filippelli, Chairman



WSA LONG-TERM PROJECTS

Bapak's Talks - SPI, UK

These are an important resource for all Subud members for all time, and MSF is fully committed to preserving them, improving accessibility and encouraging members to make the fullest possible use of this great gift. The total grant of US \$91,533 to SPI over the past four years reflects this commitment and enabled the re-transcribing, re-translating and publishing of Volumes 3, 4 & 5 into English, French, Spanish and Russian.

International Archives

Together with Bapak's Talks, the Archives are a legacy which must be preserved for future generations. Towards this end MSF has donated \$24,891 in the past four years to be shared between the centres. YMS looks after the Archives in Indonesia and also contributes to the Archives Fund.

WSA Tape Preservation Unit, Belgium

The work of the Tape Preservation Unit is the long-term preservation of Bapak's talks and Ibu Rahayu's talks on an optical storage medium. Since these talks are the chief and greatest treasure of the Archives, it is most appropriate that whatever funds are necessary to preserve these talks for future generations be provided to the Tape Preservation Unit. MSF has provided \$29,256 to support the continuing and dedicated work of Faisal Sillem.

ISC Tape Unit, UK

Faisal provides the ISC Tape Unit in England with cassettes of Bapak's and Ibu Rahayu's talks. Robin and Valerie Drewett who have operated the ISC Tape Unit for many years sell these cassettes as well as videos of talks at cost price to members all over the world. There are some 70 hours of video which have been archived to the highest analogue standards and are stored in three separate locations. Currently, the most cost effective solution to prevent deterioration is to copy them onto high quality digital magnetic tape. An MSF grant of \$14,500 in 1999 was made to buy the machinery for doing this.

Subud Houses.

Over the past four years providing assistance to groups, in both developed and developing countries, to acquire a place for latihan was MSF's first priority.

Below are the areas and groups supported since the Xth World Congress in grants and loans to the amount of US \$229,639

Europe	
Belgium	22,891
France	10,000
Germany	10,000
Italy	10,000
Spain	10,000
UK	22,891
North and South America	
Canada US	10,000
USA	10,000
South America	10,000
Colombia	10,000
Costa Rica	10,000
Spain	22,891
Asia	
Japan	10,000
Malaysia	10,000
Philippines	10,000
Thailand	10,000
UK	22,891
Africa	
South Africa	10,000
UK	22,891



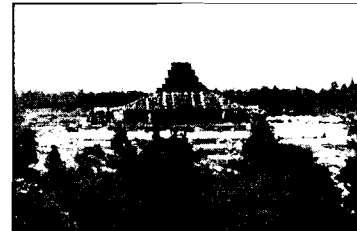
Popayan, Colombia.



Firenze, Italy



Lewes, UK.



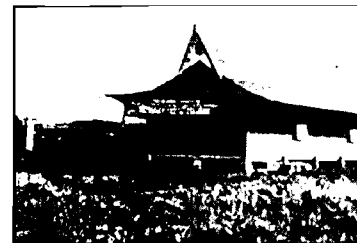
Muhammad Subuh Centre, Kalimantan.



Spokane, USA.



Kingantoko, Congo.



Palangkaraya, Kalimantan, Indonesia.

International Almoners

Bapak often reminded us that we have a duty to help those in real need. The International Almoners exist to disburse money on behalf of the membership to our brothers and sisters who are in desperate financial distress, have nowhere else to turn for help and are from countries that do not have Almoners, or personal aid funds of their own. MSF has dedicated \$5,000 annually to this cause for the past three years making a total of \$15,000.



Harlinah Longcroft

History of Subud, Australia

As a result of MSF funding Harlinah Longcroft has been able to dedicate the past four years of her life to writing the second book of the History of Subud. Now, with the support and encouragement of Freeman Wylie the second book of Volume 1 is ready in celebration of Bapak's birth. It is an important milestone in explaining the coming of Subud into the world and the impact that event has had on the lives of many of our members. MSF has also given a grant for the publication and distribution to ensure the book's readiness for the Congress.

In total MSF has provided grants of \$34,362



Latihan space, Popayan

I wish to support the work of MSF by making:

A once only contribution of:

Regular monthly repayments of:

Send to: Leonard van Willenswaard (Administrative Manager)
PO Box 8571, 3009 AN Rotterdam, Netherlands.

Tel: 31-10-2271865 Fax: 31-10-2271440

E-mail: umswikic@euronet.nl

Bank transfer details:

MSF bank account: ABN AMIRO Bank, Pegasusweg, 6 Rotterdam, Netherlands

MSF Summary Financial Report

over 2000. All amounts in US\$

BALANCE SHEET	31/12/2000	31/12/1999
Assets		
Investments	506,211	675,920
Land/Buildings	\$215,281	221,996
Subud organisations	107,039	126,884
A/c receivables	71,843	12,338
Cash	<u>968,412</u>	<u>1,072,456</u>
	<u>1,040,255</u>	<u>1,084,794</u>
	1,868,786	2,109,594
Less Liabilities	<u>144,542</u>	<u>148,275</u>
	1,724,244	1,961,319
NET ASSETS		
Unrestricted	1,171,292	1,515,536
Permanently restricted	535,922	436,000
Temporarily restricted	<u>17,030</u>	<u>9,783</u>
	1,724,244	1,961,319
INCOME & EXPENSES	2000	1999
Income		
Donations, Legacies etc.	104,656	392,715
Interest, Dividends	<u>60,322</u>	<u>52,441</u>
	164,978	445,156
EXPENSES		
Subudhouses	52,000	55,000
Grants to WSA/ISC	54,064	69,088
Grants- Other	<u>114,595</u>	<u>48,664</u>
	220,659	172,752
Management & General	<u>38,042</u>	<u>36,376</u>
	258,701	209,128
Result	-93,723	236,028
Other losses	<u>-143,352</u>	<u>-14,490</u>
Change in net assets	<u>-237,075</u>	<u>221,538</u>

A full copy of the audited accounts for 2000 is available from the Administration Manager.

MSF FINANCIAL INDICATORS

These data give an indication of the Foundation's financial performance over the last four years. All amounts in US dollars.

Contributions - The volume of contributions is an indicator of support.

	1997	1998	1999
Cash - Unrestricted	19	9	8
Cash - Restricted	0	0	23
Non-Cash	133	1	305
	<u>152</u>	<u>10</u>	<u>336</u>

Assets - A foundation's annual budget is often largely determined by the size of its base. MSF's capital base is still small by the standards of foundations, and this limits the number of projects it can fund.

	1997	1998	1999
Liquid (-/- short term liabi	1242	1125	1044
Non-Liquid	868	649	949
	<u>2110</u>	<u>1774</u>	<u>1993</u>

Investment Earnings - A large part of MSF's assets are non-income producing, Amanecer Latihan Hall, loans made for Subud Houses, various shares donated to the Foundation etc. The balance of the assets was mostly invested in money market funds. As these funds grow and market circumstances allow, a portion will be invested in stocks to maximize earnings.

	1997	1998	1999
Cash Investment Earnings	62	64	52

Expenses - Given MSF's relatively small operational budget, Management & Administration Expenses as a percentage was quite high. These expenses relate to accounting, administration manager's salary, promotional expenses etc. Through necessity and due to the practice of the early years, the Foundation reimburses current Trustees' expenses on request.

	1997	1998	1999
Expenses	51	62	36
Expenses % Total Operations	28.4	24.3	17.4

Projects Assistance - Spending policy as determined in 1997 by the parent organisation has allowed maintaining a relatively high level of project support.

	1997	1998	1999
Grants/Loans Subud Houses	59	90	55
Grants/Loans Other	70	109	118
	<u>129</u>	<u>199</u>	<u>173</u>

Spending Policy - The Foundation's parent organisation decided in 1997 that up to 15% of free cash assets could be used for operational purposes, thereby reducing the asset base.

	1997	1998	1999
Cash Assets Used			
For Operations	0	113	80